

designer cabins – david/nicolas



mitsu|lift

Lebanon
Mitsulift Lebanon S.A.L.
Mitsulift House
Dbayeh Main Road
Metn 2502-5421
T 961-4-542803
M 961-3-499336
F 961-4-542808

Cyprus
Mitsulift Cyprus Ltd.
21 Markos Drakos Ave.
1040 Pallouriotissa
1621 Nicosia
P.O. Box: 29078
T 357-22-793333
F 357-22-438995

Ghana
Mitsulift Ghana Ltd.
Octagon Building, 8th Floor
Kinbu Garden, Accra Central
P.O. Box: CT 7667
Cantonments, Accra
T 233-302-749002
M 233-540-121414
F 233-302-749003

Greece
Mitsulift Hellas S.A.
The Orbit Athens
Kifissias Avenue 115
Athens 115-24, Greece
T 30-210-9400848
F 30-210-9412465

Ivory Coast
Mitsulift Côte d'Ivoire S.A.
Arc-En Ciel Building
3rd Floor, Apartment A
30 BP 695 Abidjan 30
Abidjan, Côte d'Ivoire
T 225-65-769819

Jordan
Mitsulift Jordan LLC
Bldg. no. 3, 1st Floor
Ibrahim Al-Qatan St.
Hai Rawabi
7th Circle, Amman
T 962-6-5885829
M 962-79-6978958
F 962-6-5885867

Nigeria
Mitsulift Nigeria Ltd.
Nipost Towers
Block A, 4th Floor
No 1/3 Ologun Agbaje Street
Victoria Island, Lagos
T 234-1-4623808
M 234-818-000-4111

Syria
Mitsulift Syria Ltd.
Rouya 1 Building
The Eighth Gate, Yafour
Damascus
P.O. Box: 3 Yafour
T 963-11-3943680/1/2/3
M 963-944-256688
F 963-11-3943684

The elevator cabin perceived as an object of design with an eye for creative interiors.

An instance of disconnecting while briefly being immersed and transported in a capsule specifically built for your senses.

mitsulift invites you to experience boundless creativity and movement with its purpose built designer cabin series.



D/N 1 Ornament and fantasy prevail.

Blending old with new.

Surfaces and textures briefly disconnecting you as you travel through time. Old and new elements combine to form subtle contrasts and proportions.

Basic materials and textures which invite the eye and delight the touch. Embellished by sculpted wood, polished laminates, arched steel, diffused light and natural Travertino, all specific details making this cabin interior unique.

Sectioned differently than most elevator cabins, the D/N 1 model divides horizontally. A rounded mirror adorns the back wall, softening the geometry of its surrounding. Folded sheets of stainless steel with arched edges merge the points where wood and laminate meet.

The lower section of the cabin is available in four colors: Grenadine Red, Pepper Grey, Night Blue or Basil Green.



**Informal simplification.
Where style and
structure coincide.**

**Smallest details
of fine craftsmanship.**

The D/N 1 cabin Car Operating Panel is split between an upper sculpted wood section and a lower color laminate section. The top piece revealing only an integrated display while call buttons peek through the lower piece.

The ornamental mirror shapes and frames the back wall of the cabin delicately.

The mirror's surrounding frame is crafted from a single folded sheet of stainless steel with arched edges. Mirror dimensions vary proportionally pending the size of the chosen cabin and conform comfortably to most client demands.



**Handrail.
Refined naturally
to the touch.**

The simple grandeur.

The handrail is crafted from natural French oak wood. Its shape facilitates the best form of natural grip for passengers, while the choice of material represents an organic element that is enjoyable, comfortable and assuring to the touch.

Placed solely on the back wall, it emphasizes support for additional passenger stability while creating visual balance and practicality inside the elevator cabin.

The handrail has a fixed diameter of 40mm and a starting length of 700mm to fit the smallest cabin size. The length of the handrail can be proportionally extended pending the size of the chosen cabin.

Ceiling and Floor. Diffuse and contrast.



Barrilux Stretch Ceiling System.

Conversations of light and stone.



Floor and skirting in Travertino stone.

The D/N 1 ceiling is mounted with a stretch uniform lighting system projecting clear luminous streams of light.

The diffused lighting spreads homogeneously, effectively balancing the space while giving the cabin a more crisp and contemporary look and feel.

The cabin floor is made from a single slab of Travertino stone. The irregular surface reflects varieties of subtle patterns and veins. Its solid graceful texture adds a vibrant contrast to the wooden panelling.

The cabin skirting also made from Travertino stone, has delicately rounded conforming edges.



D/N 2 The city shuttle.

A futuristic look into urban travel.

Contrasting elements and temperatures under a very streamlined environment.

Warm wood, lustrous steel, streams of dramatic light and a plush wool floor – all selected to smoothly pleasure the senses.

The D/N 2 cabin is divided into clean vertical modules consisting of an inlay of stainless steel and oak wood panels. A centralized rectangular mirror integrated into the cladding of the cabin's back wall adds an illusion of deep space.

Instead of the conventional handrail, the D/N 2 provides two solid oak wood butt rests placed on each side of the cabin, offering practical support and stability to leaning passengers.

The stainless steel sections of the cabin are available in two palette choices: Standard stainless steel in silver tone or anodized stainless steel in black.



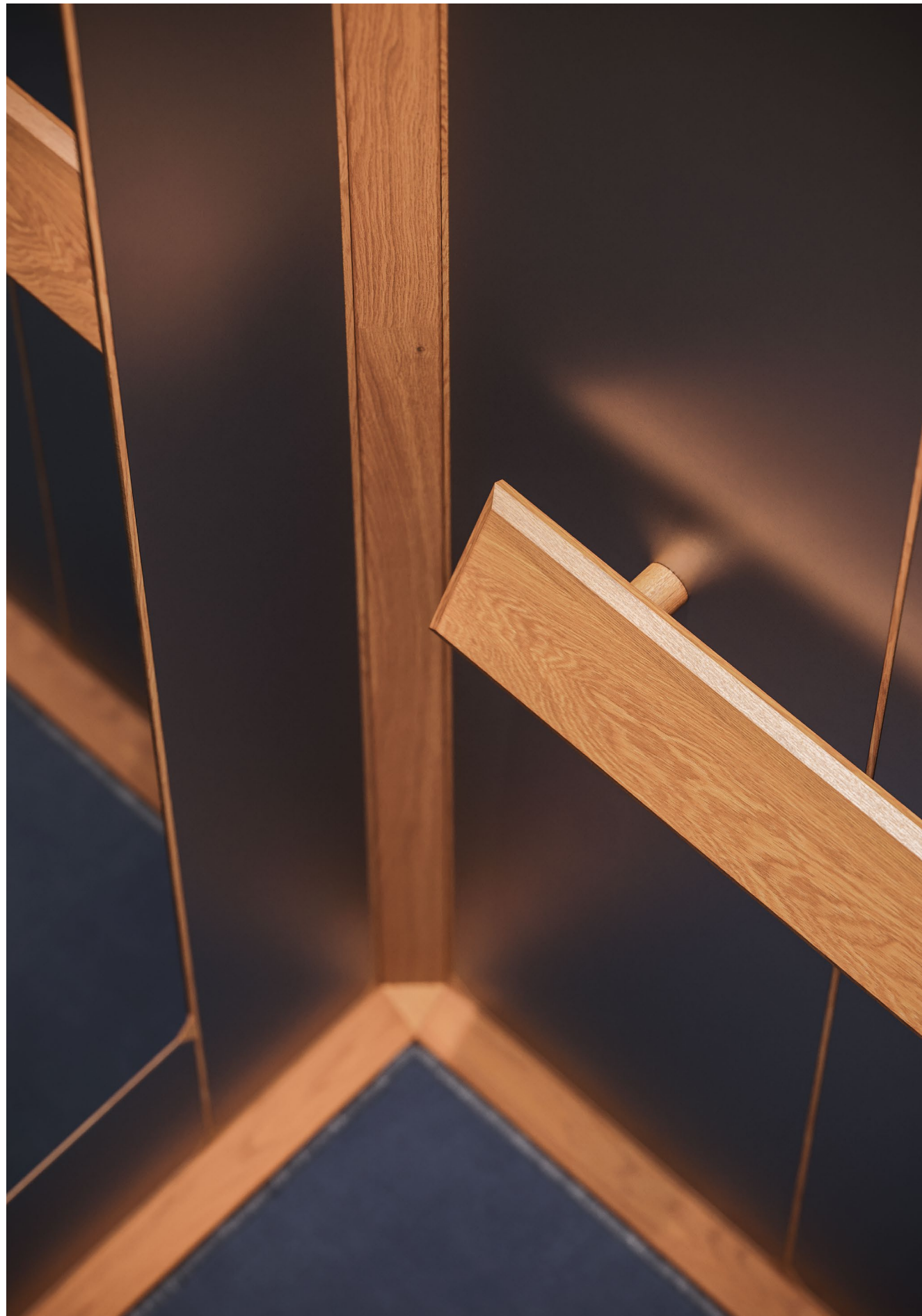
**Formal simplification.
Where style and
sleekness coincide.**

**Dissect and
streamline – whole
bare minimums.**

The D/N 2 cabin is efficiently designed housing a concealed Car Operating Panel. Essential elevator elements are meticulously integrated within the panel structure.

Stripped to a bare minimum, one clean sheet of stainless steel conceals the Car Operating Panel in its entirety, only displaying the screen and call buttons.

The mirror as an accessory, is discreetly inlaid onto the back wall of the cabin. The rectangular shape blends naturally with its surroundings adding depth and perspective to the overall interior.



**Butt rest.
Comfortable support
for leaning passengers.**

**At the perfect angle,
on the perfect side.**

Instead of the conventional handrail, D/N 2 offers forward thinking and practical approaches to passenger support.

A pair of butt rests are placed on each side of the cabin. The rests are crafted from solid natural oak wood and are inclined at an angle to allow passengers a lean and a rest before reaching their destination.

The placement and shape of the rests modestly break the cabin's vertical linearity with the use of wood as a material naturally unifying the surrounding space.

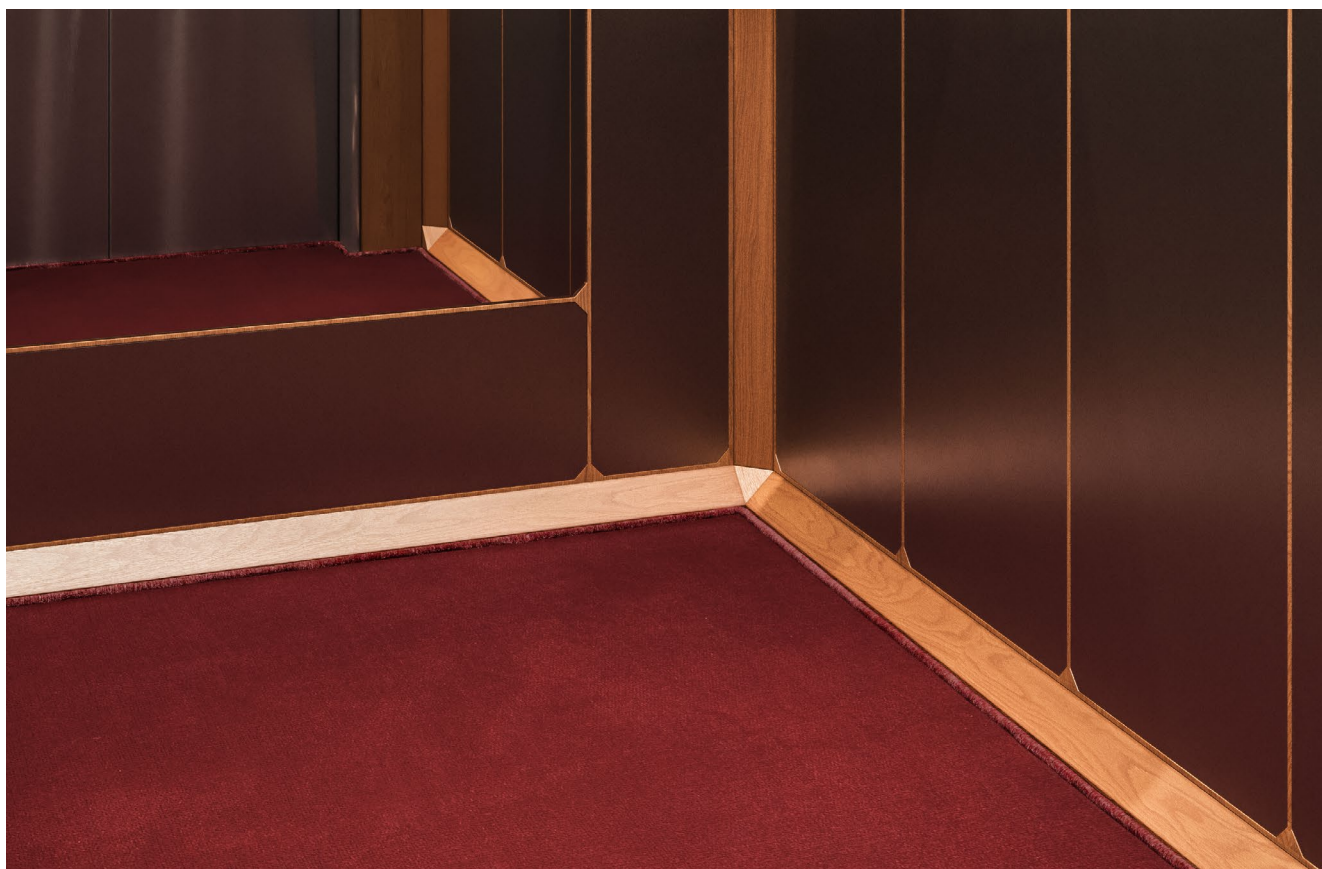
The height positioning of the butt rest is fully customizable. Its dimensions consist of a width of 500mm with a depth of 110mm and a thickness of 21mm.

Ceiling and Floor. A theatrical mood.



Integrated fixed aluminium spotlights.

Drama on the red carpet.



Wool and polyester mat in Crimson Red.

The ceiling of the D/N 2 is made from solid natural oak wood with four integrated fixed aluminium spotlights.

Rays of light bend visibly onto the surrounding panels as they bounce quietly from the mirror – softly illuminating while reflecting the overall elegance of the cabin.

The cabin floor mat is made from wool and polyester. Its silky feel complements the subtle wood skirting, and completes the detail of the surrounding space.

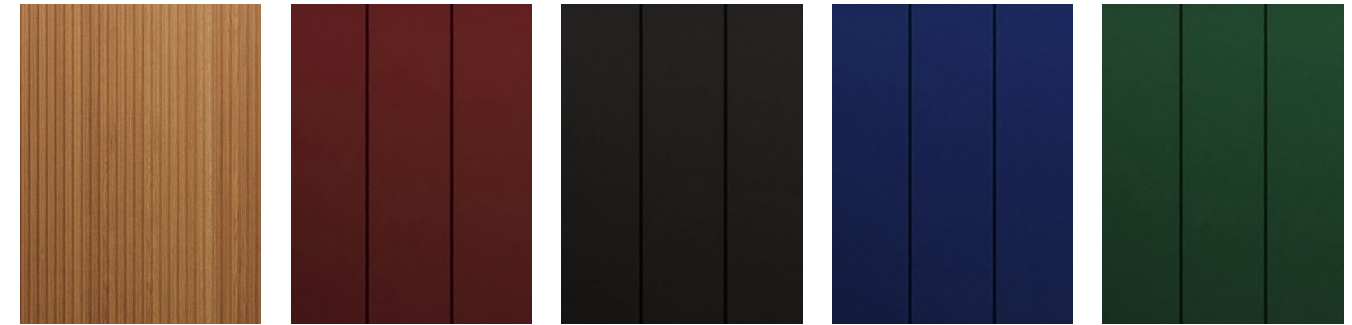
The skirting is crafted from solid natural French oak wood.

The floor mat is available in two colors: Space Blue or Crimson Red.

**Designer Cabins – David/Nicolas
Product Information**

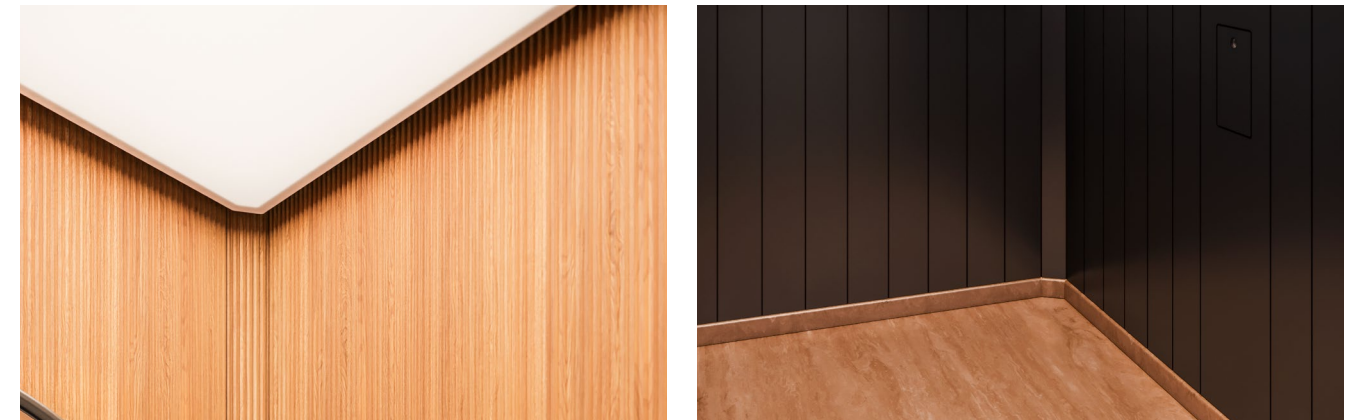
Detail	Description
Car Walls	<p>Sculpted French oak wood – Natural.</p> <p>Laminate sheet glued on MDF – available in four colors: Basil Green, Grenadine Red, Night Blue or Pepper Grey.</p>
Skirting	Travertino stone – rounded on the edges.
Floor	Slab of Travertino stone – with the possibility of tiling. 20mm thickness – Filled matt finish.
Ceiling	Stainless steel frame to accomodate for Barrilux Stretch Ceiling System.
Light	LED in natural white – or pending client request.
Handrail	Round – Ø 38mm bar made from solid French oak wood. Handrail holder and ends in stainless steel with hairline finish. Handrail is placed on the rear wall at 900mm from the ground. Starting length of 700mm.
Mirror	<p>Rounded mirror glass with splinter protection film. Positioned on the rear wall.</p> <p>Mirror edges framed with a folded sheet of stainless steel with arched edges.</p>
Car Operating Panel	Fully concealed for both Mitsubishi and mlift car operating system models.

Car Walls



French oak wood – Natural. Laminate – Grenadine. Laminate – Pepper. Laminate – Night Blue. Laminate – Basil.

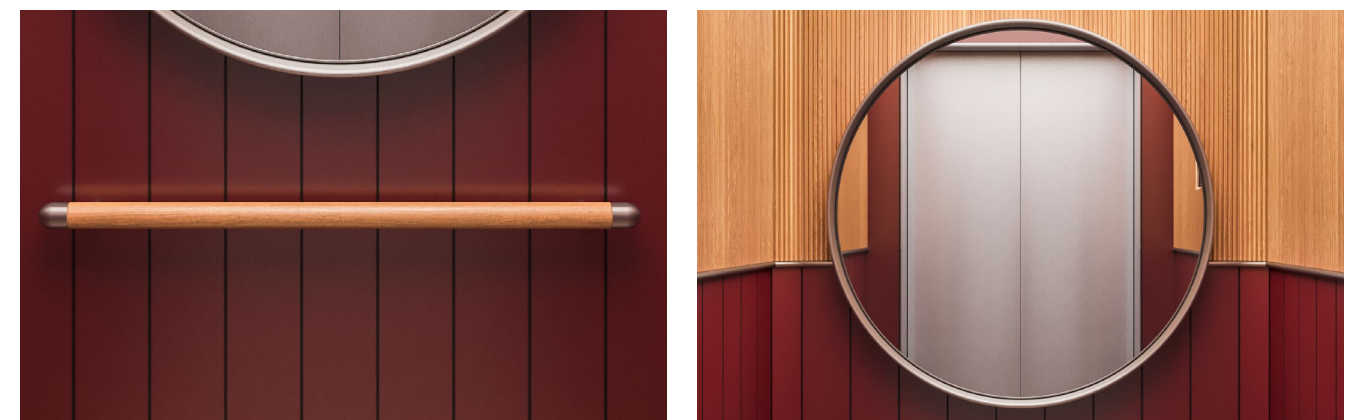
Ceiling and Floor



Barrilux Stretched Ceiling System.

Italian Travertino stone – Filled matt finish.

Handrail and Mirror



Handrail in solid natural oak wood with stainless steel ends.

Rounded mirror framed with a folded sheet of stainless steel.

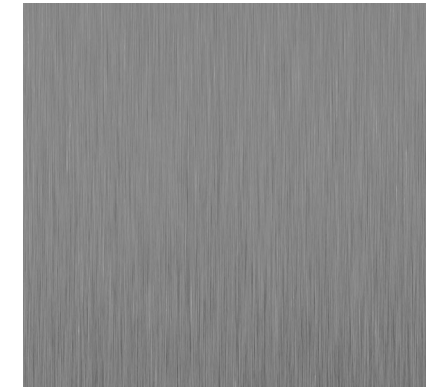
The colors represented on the opposite page are close approximations of the actual finished product tones and are used for reference consideration.

Detail	Description
Car Walls	Inlay of stainless steel sheet and natural French oak wood. Stainless steel in plain with hairline finish or anodized stainless steel in black.
Floor	Wool and polyester floor mat – 6mm available in two colors: Space Blue and Crimson Red. Customizable – pending client request.
Ceiling	Oak wood.
Lighting	Aluminium spotlights with fixed light direction.
Light	LED in natural white – or pending client request.
Buttrest	Flat French oak wood plate placed on the side walls with a thickness of 21mm. Height from the ground is customizable – pending client request.
Mirror	Rectangular mirror glass with splinter protection film. Centralized and positioned on the rear wall. Mirror edges ground & polished – Inset Flush.
Car Operating Panel	Fully concealed for both Mitsubishi and mlift car operating system models.

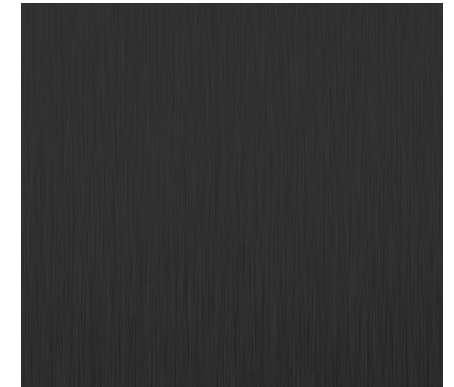
Car Walls



French oak wood – Natural.

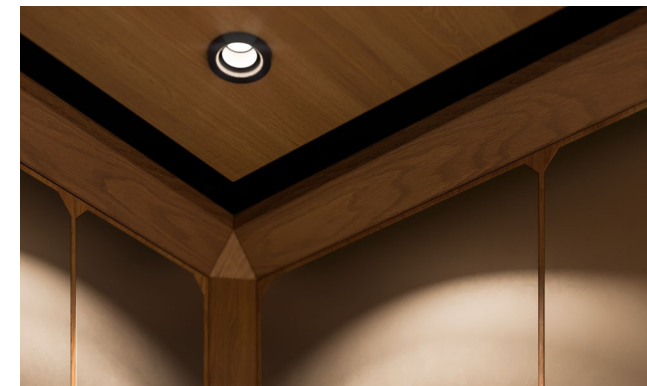


Plain stainless steel – Hairline finish.

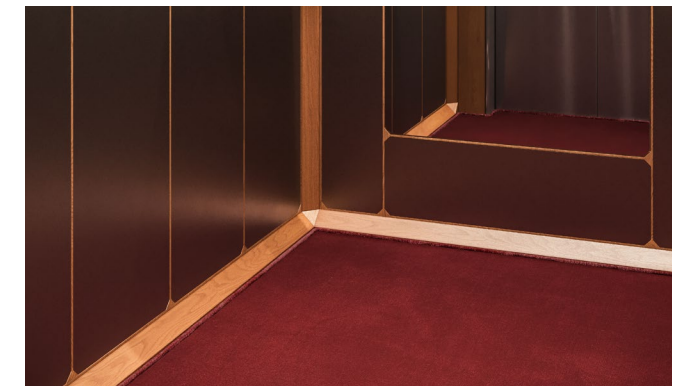


Black anodized stainless steel – Hairline finish.

Ceiling and Floor



Stainless steel fixed spotlights.

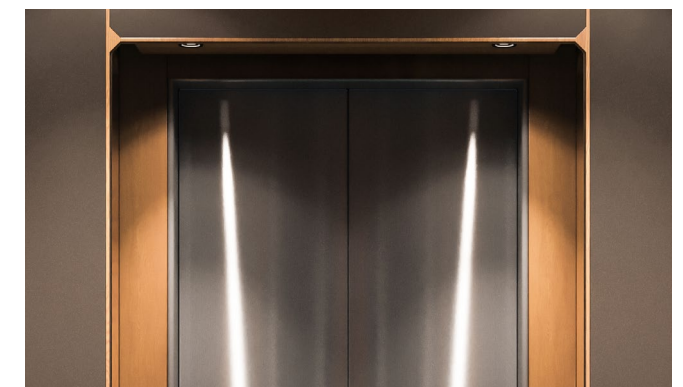


Wool and polyester floor mat .

Butt Rest and Mirror



Butt rest in solid French oak wood.



Inset/ Flush rectangular mirror.

The colors represented on the opposite page are close approximations of the actual finished product tones and are used for reference consideration.

**A product of technological
and human alchemy.**

